

PLAN
CUT AWAY TO SHOW FLOOR FRAMING

SIZE OF BUILDING DESIRED, CONSTANT AS SHOWN. CHANGED AS POST SPACINGS AS SHOWN.

MINIMUM SIZES OF CONCRETE FOOTINGS, AND FLOOR BEAM TO POST CONNECTIONS REQUIRED WHERE INDICATED ON PLAN.

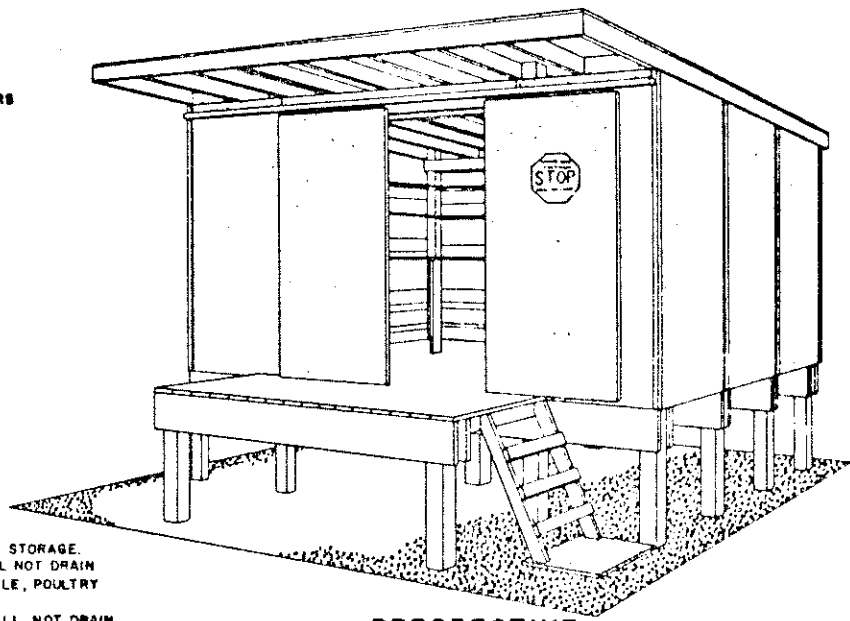
POST	DIAM	DEPTH	BOLTS	CONNECTORS
A	12"	6"	TWO	+ FOUR
B	16"	10"	THREE	+ SIX
C	18"	10"		
D	24"	14"		
E	10"	6"	ONE	+ TWO
F	12"	8"	TWO	+ FOUR
G	10"	6"		

CONNECTORS ARE 2 1/2" DIAM. TOOTHED RINGS. THE 3/4" DIAM. MACHINE BOLTS, LARGE PLATE WASHERS AND ALL NAILS SHALL BE HOT-DIP GALVANIZED OR OTHERWISE TREATED TO BE CORROSION RESISTANT.

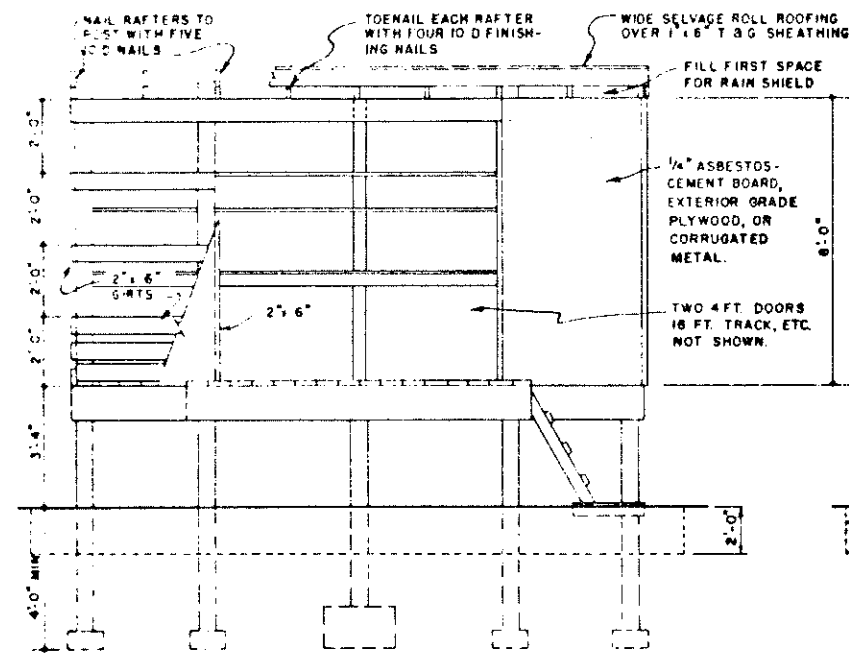
1" x 3" BATTENS NAILED OVER A BEAD OF CALKING COMPOUND AT ALL PANEL JOINTS AND AT CORNERS OF SHED.

IMPORTANT: CHOOSE LOCATION OF STORAGE SHED CAREFULLY

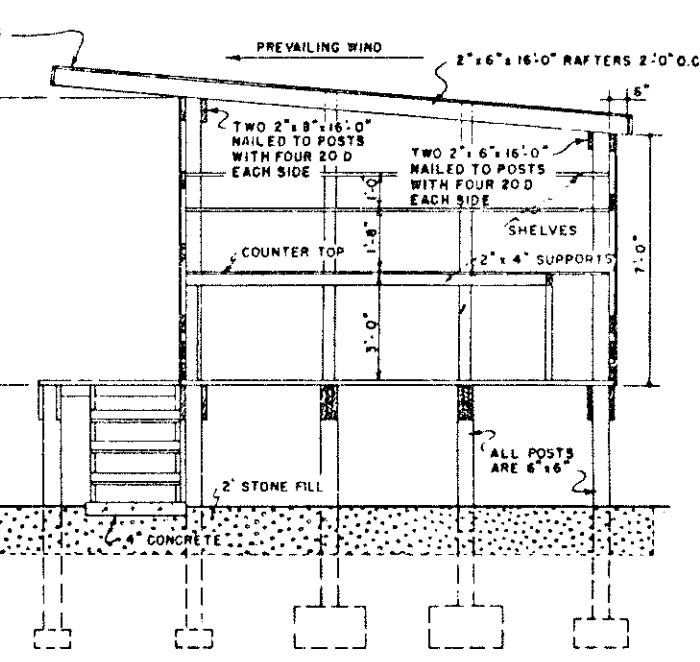
1. SEPARATE FROM LIVESTOCK, FORAGE AND FEED STORAGE.
2. SITUATE SO THAT WATER FROM STORAGE AREA WILL NOT DRAIN INTO OR THROUGH PASTURE OR LOTS WHERE CATTLE, POULTRY OR OTHER LIVESTOCK MIGHT FEED.
3. SITUATE SO THAT WATER FROM STORAGE AREA WILL NOT DRAIN INTO STREAMS OR PONDS.
4. STONE FILL AT BASE IS DESIRABLE AS SUMP TO TRAP ANY LEAKAGE FROM SPILLED OR BROKEN CONTAINERS.



PERSPECTIVE
NO SCALE



FRONT ELEVATION
CUT AWAY TO SHOW FRAMING



SECTION X-X

POSTS, FLOOR BEAMS AND FLOORING SHOULD BE PRESSURE-TREATED WITH AN OIL BASE PRESERVATIVE TO A RETENTION OF 8 LBS PER CUBIC FOOT.

DESIGN ASSUMPTIONS
DRESSED LUMBER WITH ALLOWABLE FIBER STRESS OF 1,400 P.S.I.
SNOW LOAD NOT TO EXCEED 25 LBS. PER SQUARE FOOT.
SOIL BEARING CAPACITY OF 4,000 LBS. PER SQUARE FOOT.
MAXIMUM FLOOR LOAD, UNIFORMLY DISTRIBUTED, 40 TONS

COOPERATIVE EXTENSION WORK IN AGRICULTURE AND HOME ECONOMICS		
AND UNITED STATES DEPARTMENT OF AGRICULTURE COOPERATING		
STORAGE SHED FOR PESTICIDES		
NY	'72	6136 SHEET 1 OF 1